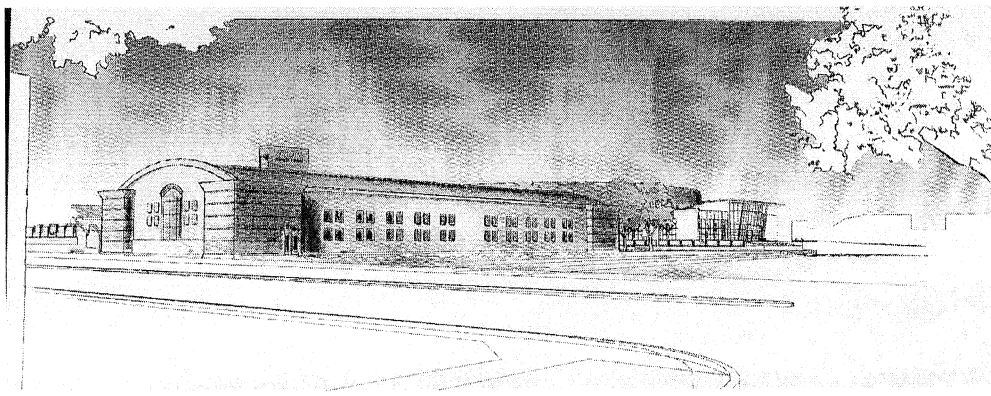


sam hughes neighborhood association

News on Hughes

Winter 2008



Building respect . . .

Most Sam Hughes neighbors probably ascribe to the adage, “Good fences make good neighbors.” But what if your neighbor is a small city of 50,000 that can build what it wants where it wants? Fortunately, RESPECT came into play in the case of the new UA basketball training facility at the intersection of Third and Campbell.

The UA Intercollegiate Athletics’ (ICA) privately-funded practice facility was not subject to City zoning laws, nor was public input legally required. However, under the leadership of Director of Athletics Jim Livengood, ICA reached out to their donors, the neighborhood, UA Facilities Design and Construction, Coach Lute Olson, and local Architect Klindt D. Breckenridge, to come up with a design (for an additional \$1 million) that put the facility 15 feet underground to make it more compatible with the adjacent single-story residential neighborhood.

While we choose to live in close proximity to the University of Arizona because it is an exceptional educational and recreational oasis, we are also subject to the negative impacts of being next door to a campus, such as party noise, parking, and traffic. Fortunately, ICA recognizes that respecting our residential quality of life is good on both sides of Campbell Avenue. According to the UA, Project Architect Klindt Breckenridge and his team “. . . have demonstrated an extraordinary sensitivity to the spirit of the University of Arizona Campus and a deep commitment to the tradition of UA athletics in the architectural fabric of the UA campus.”

What could have been a hulking monstrosity across the street from one-story residences is now in concert with the neighborhood, the red-brick of the State’s first university, and the oldest continually maintained public green space in Arizona. Over the past 27 years, Breckenridge has designed and studied more than 80 new and renovated facilities for his alma mater. For his efforts, Breckenridge (AIA, BA 1981) was recently awarded a “Bear Down Award” by the UA Alumni Association. Thank you, Klindt, and UA ICA, for a job well done!

--Frank Soltys

Board Members

John O’Dowd, President
520/325--0379
Frank Soltys, V.P.
Carolyn Classen, Secretary
Leon Bear, Treasurer

CCRC Representatives

Frank Soltys
John O’Dowd

Traffic/Security

Doug Donahue
Michael Guymon

Historic Preservation

Kathi McLaughlin
Frank Soltys
Ed Stokes

Mackey Project

Janett Carbajal

Webmaster

John Wilder

Membership

Rick Bell

Also:

Larry Roberts
Sylvia Mungaray

Co-Editors

Wallis Downer
Gail Schuessler

Neighborhood Watch

Rick & Debbie Stertz
Debbiestertz@gotucson.com

POB 42931
Tucson 85733-2931
www.samhughes.org

Board meetings:

3rd Tues. each mo., 7pm
Himmel Library --
Everyone Welcome

O'Dowd's Overview . . .

SHNA, Inc. is a non-profit tax-exempt corporation that is providing services to the residents of the square mile area between Broadway, Speedway/Country Club and Campbell. The Association Board consists of residents who volunteer their time and are elected by the membership at the annual meeting held every year on the 3rd Tuesday of January at Sam Hughes School. The Board strives to represent the residents in all parts of the neighborhood involving city services, land use, schools, university relations, crime prevention, traffic and parking, public housing, Himmel Park and Library, and historic preservation. The Board also conducts a program to recruit and train volunteers to assist elderly residents who need assistance in the tasks of daily living; publishes a quarterly newsletter; and operates a website and listserv. Recently the Board budgeted money to expand and coordinate Neighborhood Watch groups in the Sam Hughes Neighborhood.

I urge you to attend the Annual Meeting at Sam Hughes School on January 20, 2009 and vote for neighbors who will serve the entire agenda of the neighborhood. Our neighborhood association needs active Board members who will provide leadership in the many areas affecting the quality of life in the neighborhood. Members are eligible for election as Board members of the Association. Members interested in serving as Board members should place their name in nomination by contacting Skip Andree by e-mail at andree@noao.edu. To vote at the Annual Meeting you should have paid your dues as an Association member. Please note our dues reduction for new members and our biennial (2-year) dues packages (page 4).

Our guest speaker at the Annual Meeting, John Evans, is an Arizona Assistant Attorney General who is a long-time resident of our neighborhood. He coordinates SAFEE, Stop Abuse and Financial Exploitation of the Elderly, a coalition of law enforcement, social services agencies and advocacy groups in Pima County. He will address a crime problem that is less visible than street crime, but which can be even more devastating to its vulnerable victims.

This year's Home Tour, SHNA's major fundraiser, is scheduled for March 15, 2009. Please call Denise Blake at 323-7891 or e-mail her at johnden43@hotmail.com if you are interested in volunteering your home for the tour.

**ANNUAL MEETING AGENDA - SAM HUGHES NEIGHBORHOOD ASSN.
SAM HUGHES ELEMENTARY SCHOOL CAFETERIA
TUESDAY, JAN. 20, 2009**

6:30 - 7:30 Socialize, enjoy light refreshments, visit the following kiosks:

- Membership - Sign up (see the special incentives on page 4)
- Crime Prevention - Neighborhood Watch and related topics
- Elderly Housing (Mackey Project)
- Historic Preservation/Himmel Park/Library
- Home Tour - March 15, 2009
- Sam Hughes Cares for Seniors
- Traffic - Safety for pedestrians, bicyclists and motor vehicles
- Education - Supporting schools that serve our neighborhood children
- Noise abatement - Military Community Relations Committee

7:30 - 8:00 Business Meeting: President & Treasurer's Reports; Election of 2009 Board Members

8:00 - 8:45 Presentation: "Protection of the Vulnerable Adult" - John Evans, AZ Asst. Atty. General

8:45 - Adjournment



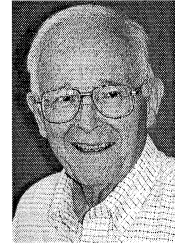
Unleashed dogs at Himmel Park . . .

Sam Hughes residents who take their dogs to Himmel Park are concerned by the number of unleashed dogs running around the park. The City of Tucson does have a leash law that is enforced.

**5...4...3...2...1!
HAPPY NEW YEAR!**

Interview with Ned Nelson, Oct. 7, 2008 . . .

"I loved the simplicity of it; Merrit Starkweather designed the house," said Ned Nelson, former Sam Hughes resident and well known Tucson architect. The house he was referring to was in the 2000 block of E. 4th Street where he and his second wife lived from 1965 until 2006 when he moved into a retirement community. At age 90, Mr. Nelson is as sharp as can be and a valuable resource on the neighborhood. He has files, articles and maps he has saved through the years. He remembers when UofA President Richard Harvill announced in the newspaper that the University needed to expand into the Sam Hughes neighborhood. "Many of us informed the President that we would fight against that." When asked what made Sam Hughes so special, he replied, "I liked the variety of architecture, the different ages of residents, and the different income levels. There were big houses and small houses. There were also always interesting people - doctors, lawyers and professors. The streets are dignified and handsome like 4th Street, which is lined with palm trees." "I only marry people in the neighborhood," he joked because his second wife lived on 2nd Street & Treat when he met her. Mr. Nelson graduated from Yale University with a degree in architecture. He came to Tucson in 1950. In 1961 he and two partners formed the architectural firm of Cain, Nelson & Wares. A 4th partner, Mr. Cook, joined them and the firm became CNWC. Some of the buildings he designed were the Convention Center, a joint venture with Friedman & Jobusch, and the main post office on Cherrybell. His last big project was the border station in Nogales. He also designed homes through the years.



---Interviewed by Wallis Downer

Tax Credit to Sam Hughes Elementary . . . WE NEED YOU

If you pay Arizona income tax, this is a way to direct your tax dollars. Send a check (\$400 married/\$200 single) to Sam Hughes Elementary, 700 N. Wilson Ave., Tucson 85719. When you file your Arizona tax return you are credited the amount you gave. Sam Hughes uses the money for extracurricular activities such as chess, PE, Opening Minds thru the Arts (OMA) and Language Arts Program (LAP). This year we will receive even less state funding so your credit is even more needed to keep these programs at Sam Hughes. The site council is developing options for a school focus based upon our school's mission and values as well as a list of qualifications/priorities for a new principal. As a part of this neighborhood, you have a chance to really make a difference! If you have any thoughts or questions, please contact me at edlisastokes@cox.net.

--Ed Stokes, Sam Hughes Elementary Representative

Dear Neighbors . . .

Our mission is to help our older neighbors live independently in their own homes. This is a reminder that the volunteer group **SAM HUGHES CARES FOR SENIORS** is alive and well! If you are a senior who lives in Sam Hughes and needs help with transportation or light household chores, or would simply like a friendly visit, please give us a call. We can be reached at 561-0113. There is no charge for our services. If you would like to volunteer, we would love to hear from you. We especially need volunteers who can drive during the week, as many of our seniors need to get to medical appointments. (Drivers are reimbursed for mileage at 58.5 cents/mile.) We would like to thank the Sam Hughes Neighborhood Association for its funding and support. **Donations to Sam Hughes Cares for Seniors can be sent to SHCS, c/o Trudy Mills, 2748 E 9th Street, Tucson, AZ 85716.** For additional information, visit www.samhughes.org.

---Thanks, Trudy Mills, Coordinator

2300 East Hawthorne Block Party . . .

Neighbors in the 2300 block of E. Hawthorne had another **block party** on October 26th. There was live music provided by Amilcar Guevara and his band, BBQ grills available for the potluck dinner and activities for the children. Special guests included four delegates, a facilitator to the Open World Program here in Tucson, and visitors from Almaty, Kazakhstan. Hopefully, this will be **an annual event!**



Community Services Department
P.O. Box 27210
Tucson, AZ 85726-7210

Sam Hughes Neighborhood

Dated Material

Take Action Now! Sam Hughes Neighbors are known for their involvement. Please get involved in our neighborhood association by becoming a member. For a list of the many neighborhood association-supported benefits, see the membership page on the neighborhood association website <http://www.samhughes.org>.

Special Offers! Join between 01/09-06/09 - FIRST TIME members get 1/2 off their paid 1st-year membership. Get a SHNA Logo T-shirt with a paid 2-year renewal or new membership. Quantities are limited. Offers cannot be combined. Some restrictions apply.

Thank you to all of our current members for supporting our neighborhood association! Members are eligible for raffle prizes. January raffle: Sam Hughes Neighborhood Association Home Tour Tickets.

Membership Information:

Name: _____ Phone: _____

Address: _____ Email: _____

_____ Annual Membership: \$20. _____ First Time Membership: \$10. _____ Two Year Membership: \$40.

Please include a check payable to SHNA, and mail to SHNA, c/o Membership, P.O. Box 42931, Tucson, AZ, 85733

I am interested in volunteering: _____ Yes _____ No
_____ Historic Preservation _____ SH Cares/Seniors _____ Home Tour _____ Traffic
_____ Campus/Community Relations _____ Special Events _____ Membership _____ Zoning
_____ Park/Library/Water Tower _____ Board of Directors _____ Newsletter _____ Website

I am interested in participating in neighborhood watch: _____ Yes _____ No
My current watch captain is: _____

Voting members must be 18 years of age and reside within the Sam Hughes Neighborhood which is bounded by Broadway, Speedway, Campbell, and Country Club. Businesses, organizations, and non-residents may join as non-voting association members.

The City of Tucson, its officers and employees, its Community Services Department and all other offices neither agrees nor disagrees with the views expressed or implied in this communication or any referenced websites and are not therefore responsible. The distribution requester is solely responsible.