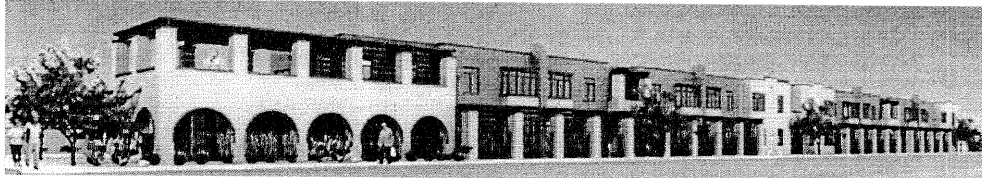


sam hughes neighborhood association

News on Hughes

Autumn 2009

O'Dowd's Overview . . .



Recently awarded 2010 AIA (American Institute of Architects) Design for Aging National Award

Casitas on Broadway: Janett Carbajal, SHNA Board Member, has worked for several years to make this elderly housing project on Broadway & Plumer a reality. Thanks in great part to her efforts, the 56-unit project (a mix of 2-story apartment buildings and single story duplexes organized around 4 courtyards located on the former Don Mackey Auto Sales property) are now under construction. The design, which is compatible with the neighborhood, will provide a pleasant home for elderly in need of affordable housing. This project is one of the first HUD projects to achieve LEED (Leadership in Energy and Environmental Design) green building certification. Lizard Rock Designs, LLC received the awards for innovation in the affordable housing and design categories. We are grateful that HUD, the City, and Catholic Social Services allowed us to participate in this project. (Olsen will be closed at Broadway in order to accommodate construction.)

A goal of SHNA is **historic preservation**. Adjacent to our neighborhood at 800 N. Country Club, the Benedictine Convent is one of the architectural treasures of our community. Designed by Architect Roy Place, the Spanish Revival structure is in desperate need of major repairs. Its tile roof and heating and cooling systems need replacement at an estimated cost of \$1 million. A fundraising campaign entitled *Preserving Our Heritage* is now underway. To raise funds, the Monastery is holding a benefit Concert by the Tucson Boys Chorus featuring Danish pianist Torsten Juul-Borreell on November 21. As neighbors fortunate to reside near this masterpiece, your contributions would be welcome. For more information call 325-6401.

Among the topics addressed on the **listserve** recently are traffic circles, jet noise, crime prevention, the Propositions, minidorms, pets and wildlife (animals and students). The listserve may occasionally be irksome, but on the whole it's better than the system that existed under previous Boards. Under that system, neighbors emailed the Board and the Board decided what messages would be shared with the neighborhood. Now, if you want to email the Board alone and not the entire listserve, you may still do so. And, the listserve has been valuable for providing a source of ideas and mutual assistance. It's building a feeling of community. Of course we don't always agree with each other, but the discourse has always been civil and respectful of the other person's opinion. I think it's an asset to our neighborhood and thank all of you who participate. I commend you for your efforts to contribute to the common good of the neighborhood, and also wish to especially thank our webmaster John Wilder.

Board Members

John O'Dowd, President
520/325--0379
Ed Stokes, V.P.
Carolyn Classen, Secretary
Steve Gilsdorf, Treasurer

CCRC Representatives

Frank Soltys
John O'Dowd

Traffic/Security

Doug Donahue

Historic Preservation

Kathi McLaughlin
Frank Soltys
Ed Stokes

Mackey Project

Janett Carbajal

Webmaster

John Wilder

Membership

Rick Bell

Also:

Sylvia Mungaray

Co-Editors

Wallis Downer
Gail Schuessler

Neighborhood Watch

Rick & Debbie Stertz
Debbiestertz@gotucson.com

POB 42931
Tucson 85733-2931
www.samhughes.org

Board meetings:

3rd Tues. each mo.,
7pm Himmel Library

Everyone Welcome

SCHOOL NEWS . . .



Interview with Janet Jordon, Sam Hughes School's New Principal . . .

Janet Jordon, Sam Hughes School's new principal, says one of her initial impressions of the school was its history and ties to past generations. She also admires how the community works together to make things happen at Hughes. "People feel a sense of pride whether they have children here or not," she says. Janet is a native Tucsonan who attended Kellond Elementary, Palo Verde H.S. and UofA. She taught at Marshall, Holladay, Corbett (GATE Program) and was curriculum specialist at Cragin. She served as principal at Reynolds Elementary.

Her husband works for Union Pacific. They have two children, a daughter who is a music teacher, and a son who is a police officer. In her spare time, she is an avid reader, hiker and skier. "I love the chess and P.E. programs and OMA. They address all the needs of a child. There are wonderful kids here - bright, inquisitive and caring. The teachers and staff are outstanding. What I see is their expertise and hard work reflected in the students' learning." When asked about the challenges facing public education today, she mentioned the budget. "Certainly the budget has become a priority in how we spend our time and thinking." She also mentioned how these economic times have affected the students. "We have many more applications for free lunch. There are families going through financial hardships. These are the worries I take home," she said. **--Interviewed by Wallis Downer**

Successful Fundraising at Sam Hughes . . .

This summer, Sam Hughes parents launched a fundraising drive to try to save a teaching position that was lost because of the state budget cuts. We received an incredible response from Sam Hughes neighbors. Overall, \$41,000 was raised from Sam Hughes parents, neighbors, alumni and other community members. That included a \$10,000 gift from a Sam Hughes neighbor without children at the school, for which the school community is extremely grateful.

We were able to hire back a beloved teacher, Ellen Dunscomb, who is teaching 1st grade this year. One neighborhood couple without children at the school dedicated \$2,500 to help with staffing in the library since we also lost a librarian because of the state Legislature's decision to cut school funding.

The Sam Hughes community is launching the annual school tax-credit drive to help raise funds to pay for the Opening Minds Through the Arts (OMA) program, chess, PE and reading tutors. For more about tax credits, please read the article written by Amy Bosco on the next page.

--Ann-Eve Pedersen

YOU ARE INVITED . . .

To *Stories That Soar!* - a free performance featuring professional adult performers and original stories written by children at Sam Hughes Elementary School

When: Friday, October 23, 2009 at 9:00 a.m.

Where: Sam Hughes Elementary School, 700 N. Wilson Avenue

Stories That Soar! is a literacy and performing arts program which merges the talents of professional adult performers and children's original stories to create innovative and insightful theatre productions for schools and community events. SharMoore's programs offer children an open invitation to write about anything they choose. When they realize their words and ideas have meaning and power beyond themselves, children are further motivated to engage in our collaborative process of bringing their original stories to life." **From the Stories That Soar! Website**

"Stories That Soar!" at Sam Hughes was made possible by a generous grant from the Arizona Commission on the Arts. --Tracy Pitt, SH PTA Rep, 360-4028

SAM HUGHES COMMUNITY ACTION COMMITTEE . . .

Gabriela Head has invited you to Sam Hughes Quality of Life Survey Findings & Follow up Actions on Wednesday, October 28th, 6pm-7:30 pm at the Hardesty Midtown Conference Room. Join us to learn more about the Committee, Survey Findings and Proposed Follow up Actions. See more details and RSVP on Sam Hughes Community Action Committee at <http://samhughescac.ning.com/events/event/show>

Dear Sam Hughes Neighbor:

We are reaching out to you with a friendly reminder to please designate Sam Hughes Elementary School to receive your tax credit contribution this year. The Sam Hughes School community is so grateful for past tax credit contributions that fund the programs which keep Sam Hughes Elementary a special place for learning. In the next paragraphs, you'll find a description of what the Tax Credit Program is, why Sam Hughes School needs it, how Sam Hughes students benefit, and how **easy** it is for you to help!

The Tax Credit Program: If you pay Arizona State income tax you can contribute, regardless of whether or not you have a child in school. This is a unique opportunity for you to make a difference in your neighborhood, and it costs you nothing! It is a dollar-for-dollar credit on your State taxes, not a deduction. In other words, you subtract the amount of your contribution as a direct credit against the amount of tax liability.

Giving a portion of your state tax dollars directly to Sam Hughes School lets you control how a portion of your tax dollars is spent (instead of the Arizona legislature). You can make a tax credit contribution whether you owe taxes or are due a refund.

Why Sam Hughes School Needs Tax Credit Contributions: Funds for extra-curricular programs.

Although a surprising one in four Sam Hughes Elementary students live below the poverty line, our small school does not meet the 40% threshold that allows schools to receive Federal Title I funding. This means our school is quite vulnerable to the state education cuts, and relies more on tax credit contributions.

How Sam Hughes Students Benefit: Tax credit contributions touch every classroom and benefit each child on a daily basis. **Enrichment** programs are an integral part of the Sam Hughes education experience:

- Chess instruction reaches beyond the classroom by teaching problem solving and promoting math skills.
- Opening Minds through the Arts (OMA) creates powerful learning experiences at each grade level through music and expressive arts. Children in OMA schools learn critical skills and core content while developing an understanding and love of music, dance, opera and theater. Research has shown that music is deeply tied to brain structure and function, and that early exposure to music helps children succeed.
- Literacy Assisted Program (reading tutors), field trips, the Greening Group (a parent run recycling and earth awareness group) and Physical Education.
- **Contributions must be received by December 31st, 2009.**
- Every dollar helps! The maximum contribution is \$200 for individuals and \$400 for couples filing jointly. You don't have to give the maximum amount and you don't have to give all at once. You can still contribute the maximum amount to a public school AND make a tax credit contribution to a private school. If you itemize you can claim your State tax credit contribution as a tax deduction on your Federal tax return for donating to a charitable organization.

There are two ways to contribute - Online or by mail

1. Donate online with a credit card at <http://www.tusd1.org/contents/distinfo/aztaxcredit/index.asp>
2. Mail or bring your check to Sam Hughes School, 700 N. Wilson Ave., Tucson, AZ 85719. Checks can be made out to "Sam Hughes Elementary School." Please indicate, "tax credit contribution" on the memo line and be sure your address is on the check. You will receive a receipt either online or by mail. When it is time to file your taxes, complete Arizona form 322.

--Amy Bosco (neighbor and site council member)

Editor's note: Mansfeld Middle School and Tucson High Magnet School have also suffered serious budget cuts. Tax credit contributions would be welcomed at these Sam Hughes feeder schools as well.



Housing & Community Development Dept.
P.O. Box 27210
Tucson, AZ 85726-7210

Sam Hughes Neighborhood

Dated Material



Neighborfest 2009 . . . Come ride a free tethered hot air balloon on **Sunday, Oct. 25th**, from **1 to 4:30 pm** in the parking lot of **Trinity Presbyterian Church, 400 E. University Blvd.**, between Time Market and 4th Avenue. West University Neighborhood Association and Trinity Presbyterian Church, along with several other sponsors and neighborhood associations (including SHNA) are teaming up to host a community event for families and neighbors. This first of its kind festival will feature free trolley rides, community booths, food, free music, activities for children, a rock climbing wall and jumping castles, and the BIG draw, that aforementioned hot air balloon ride.

It'll be first come, first ride to get tickets for the balloon, so don't delay, weather permitting of course for the balloon. Neighborfest's goal is "to build community among the residents within and among the neighborhoods around the UoA, Pima (Downtown Campus), 4th Avenue and Downtown." **Come one, come all!!**

ATTN SHNA MEMBERS . . . Visit our website and check out the updated list of participating businesses and merchants in the deals and discount program. For those who previously signed up for a two-year membership, T-Shirts can be picked up at a board meeting starting October 20th.

SH CARES FOR SENIORS . . . The most pressing need continues to be transportation. Despite the fact that we trained 3 new volunteers, we are still not able to give rides to all seniors who ask. So, if you know of any possible volunteers (especially drivers), call Trudy Mills, 561-0113. Our meetings continue to be at 6pm on the 1st Tuesday of the month at Rincon Market.

UofA GAME TRASH A PROBLEM IN YOUR NEIGHBORHOOD?? Contact Suzy Mason. She would prefer email on a Sunday as that will go to her Blackberry: masons@arizona.edu, or she can be contacted on her office line at 621-6484 on Mondays.

HISTORIC HIMMEL POOL END OF SEASON FREE SWIM . . . Thanks to everyone who came out for the end of season free swim on Friday, July 31, sponsored by the SHNA. It was a beautiful evening and Himmel Pool reopens again in a mere seven more months. Please make plans to enjoy our historic pool next summer.

The City of Tucson, its officers and employees, its Housing and Community Development Department and all other offices neither agrees nor disagrees with the views expressed or implied in this communication or any referenced websites and are not therefore responsible. The distribution requester is solely responsible.